

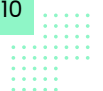


IS COMMUTING TO WORK ERODING  
**REAL INCOME FOR  
YOUR EMPLOYEES?**



# Is commuting to work eroding real income for your employees?


Commuting is a significant expense for the average American. Driving continues to get more expensive, and many people have to do it for work. Driving is often an integral part of an employee's job. Many people, because they live in rural areas or because their city is not well-served by public transit, have to drive only to commute.



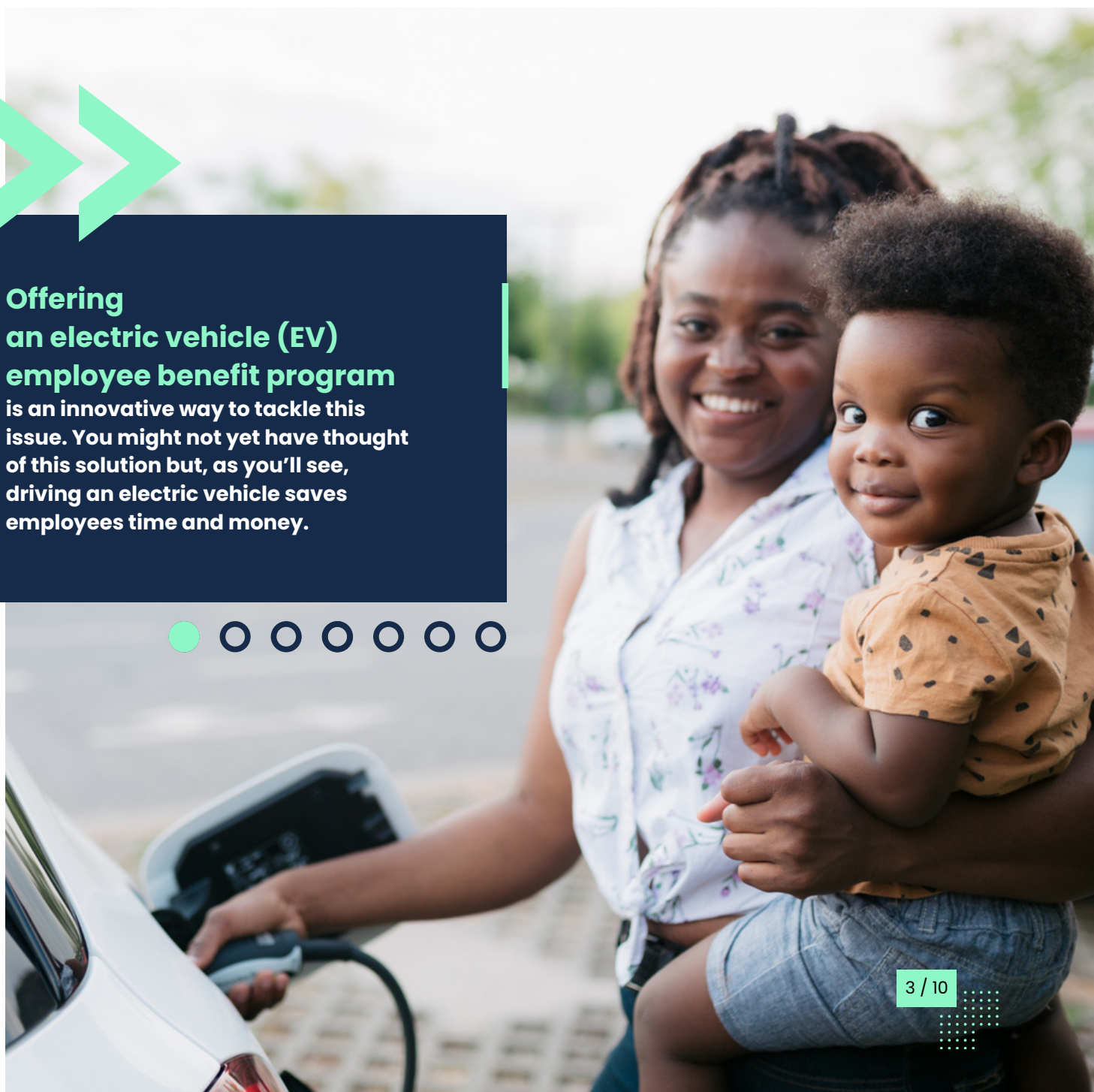


Much of any business's workforce likely commutes, and making sure that this expense is not eroding their real income can improve their lives. Especially now, with elevated gas prices throughout the US, employees are in need of help offsetting the rising costs of driving.

Most of us do not have a choice: we must drive to work, or not work. An employer can take action, though, to make sure that this necessity is not damaging to the morale or the health of their team.




**Offering an electric vehicle (EV) employee benefit program** is an innovative way to tackle this issue. You might not yet have thought of this solution but, as you'll see, driving an electric vehicle saves employees time and money.



Employers can improve HR outcomes for their team by offering EV benefits but, before we discuss how to implement these programs, let's look at some facts about the average American commute—and how much it's really costing your staff.

There are benefits directly to the company, too. Businesses wanting to eliminate Scope 3 emissions (defined below) from their value chain should consider EV programs. By what percent do you think you can reduce your corporate carbon footprint, just by converting commuting to electric? Read on to find out.



## How far is the average commute? What does it cost for Internal Combustion Engine (ICE) vehicles?

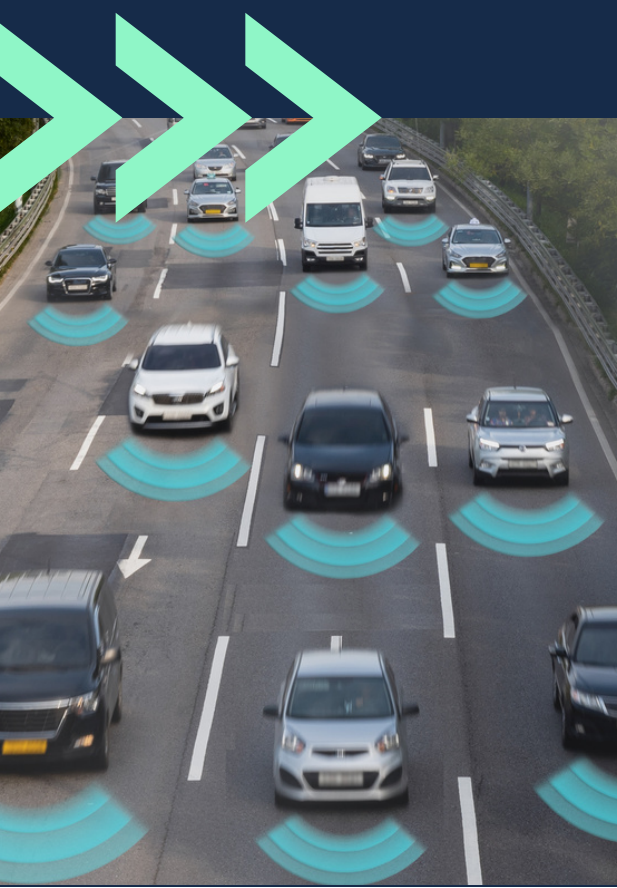
In 2021, the U.S. Census Bureau reported that the average one-way commute in the United States is around 27 minutes, or nearly an hour round trip. With an average 15 gallon tank, driving a 27-minute commute to work each day could add around \$50 worth of gas each week, or almost \$200 a month.<sup>[1]</sup>

That isn't a trivial expenditure. With employees returning to work and hitting the road on business again, now is a fine time to put **\$200 back in your team's pockets**. How can you do it?—by getting them into electric vehicles.

<sup>[1]</sup> [Should employees be given the option to work remotely as gas prices increase?](#)

What percent of employees commute?  
How do they go?

// Before the pandemic, about 130 million Americans drove to work. It is the vast majority of working commuters. //

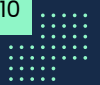


Only about 5% of people who traveled to work did so by public transit. Many employees even leave their home county to go to the office.<sup>[1]</sup>

In every state, driving yourself to work is by far the most common form of commuting—generally, 75-85% of all employees who commute do so by themselves, in a car.<sup>[2]</sup> That means that most of your commuting employees are driving. Many of your people will respond positively to a reduction in commuting costs.

<sup>[1]</sup> [How the American commute has changed over the past 50 years](#)

<sup>[2]</sup> [US Commuting Facts & Statistics | Bankrate](#)



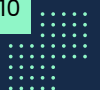


**How can you  
reduce employee  
commuting  
expenses?**

Luckily, getting your team into EVs will reduce their recurring bill, since electricity is cheaper than gas. Electric vehicles are cheaper to fuel than ICE cars, by as much as \$19,000 over eight years.<sup>[1]</sup> Furthermore, electric vehicles are cheaper to maintain<sup>[2]</sup> (remember, \$200 a month is only the gas—we haven't even talked about maintenance yet!).

[1] [Electric cars cheaper to run than gas, study finds - RMO Today.com](#)

[2] [Pay Less for Vehicle Maintenance With an EV - Consumer Reports](#)





## What is the carbon footprint of commuting?



Beyond the expense, getting your team into EVs will reduce your Scope 3 emissions—emissions in your value chain that you don't directly own. Your team's carbon emissions will decrease. By how much, would you guess?

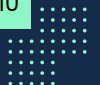
Well, if you guessed 98%, you'd be correct. That's right: all but 2% of your team's work-related carbon footprint is generated during their 1hr of daily commuting.<sup>[1]</sup> And the fact is this: emissions from electric vehicles are lower over their lifetime, even when accounting for the manufacturing inputs.<sup>[2]</sup> (You may have heard the myth that EVs involve just as much carbon. The EPA thinks otherwise.)

So not only are employee outcomes improved through EV-adoption, but business targets are met also.

---

<sup>[1]</sup> [Is Remote Work Greener? We Calculated Buffer's \[sic\] Carbon Footprint to Find Out](#)

<sup>[2]</sup> [Electric Vehicle Myths | US EPA](#)



## What does an EV employee benefit program look like?

A program like this is easy to implement with MoveEV. We offer a turnkey solution that provides the platform and content to help employees through every step of the process - from education and selection to purchase and reimbursement.



## MoveEV Supports Employees with a Complete Program

MoveEV increases EV adoption rates by helping employees through our app, call center, educational emails, and in-person events. We help employees understand the value of switching to an electric vehicle and then systematically remove the barriers to entry that can make finding, buying, and driving a non-gas car feel overwhelming. With MoveEV every employee gets:



Educational Emails & Events



Personalized Cost/Benefit Analysis



Vehicle Comparison Tools



In-Person Test Drive Days



White Glove Buying Support



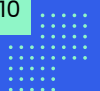
Financing & Reimbursement Support



Charging Station Guidance



Success & Impact Tracking







## | How can MoveEV help?

MoveEV is an employee-centered decarbonization alternative to the common practice of purchasing carbon offset credits. We are committed to helping your company contribute to the democratization of access to electric vehicles for corporate employees at all income levels.

MoveEV is the world's first turnkey solution that allows companies to quickly deploy a structured electric vehicle adoption "green benefits" program and carbon removal solution that aligns with corporate environmental sustainability goals and unlocks millions in government incentives and gas savings.

Visit our website  
to learn more.



[www.moveev.com](http://www.moveev.com)

This book is to be used for informational purposes only and does not constitute formal legal, business, or tax advice. Each person should consult his or her own attorney, business advisor, or tax advisor with respect to matters referenced in this post. MoveEV assumes no liability for actions taken in reliance upon the information contained herein.